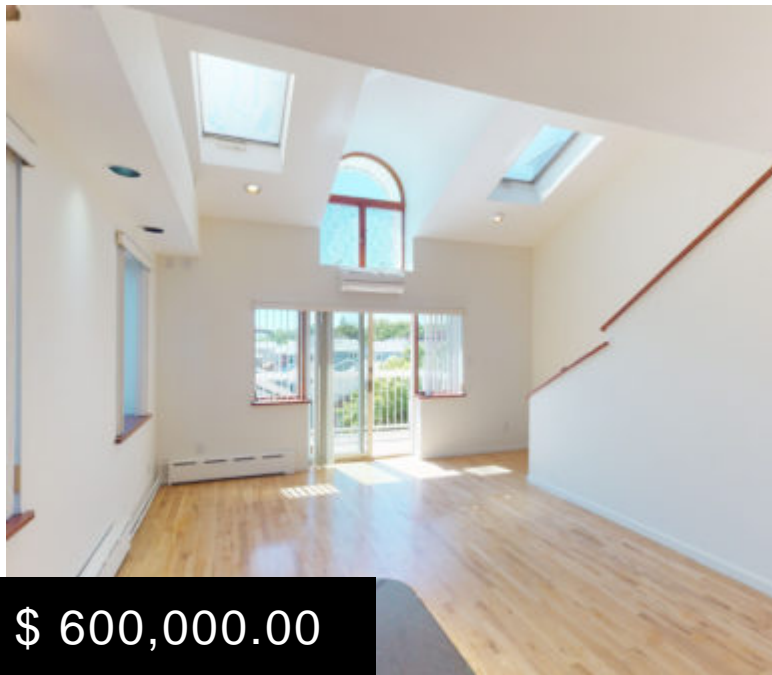
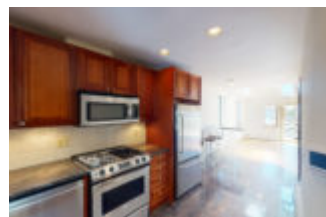
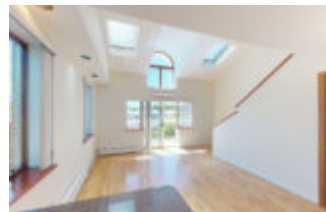


# SALE – 2 BEDROOM DUPLEX WITH PARKING IN SHEEPSHEAD BAY BROOKLYN

<https://pxm.nyc>

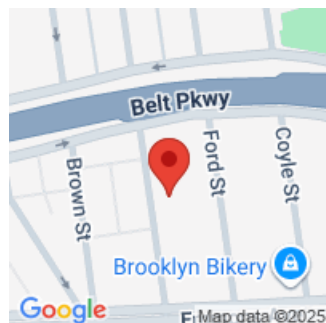


\$ 600,000.00



Dream Brooklyn Duplex: Two Bedrooms, Two Baths, Plus Priceless Deeded Parking! This is the rare opportunity every Brooklyn buyer is waiting for: a stunning, turn-key two-bedroom, two-full-bathroom duplex condo that includes a highly coveted, deeded private parking space right in front of the building. Step inside and be instantly impressed. Soaring vaulted ceilings and abundant natural light from multiple skylights and windows the home. The...

- 2 beds
- 2 baths
- Residential



**CALL US NOW**

Email: [Hello@PxM.nyc](mailto:Hello@PxM.nyc)

Address: [www.PXM.NYC](http://www.PXM.NYC)



---

## BASIC FACTS

**Type:** Condo - SALE

**Unit:** 3C

**Bedrooms:** 2

**Address:** 2803 Batchelder Street

**Neighborhood:** Sheepshead Bay

**Bathrooms:** 2



### CALL US NOW

Email: [Hello@PxM.nyc](mailto:Hello@PxM.nyc)

Address: [www.PXM.NYC](http://www.PXM.NYC)

